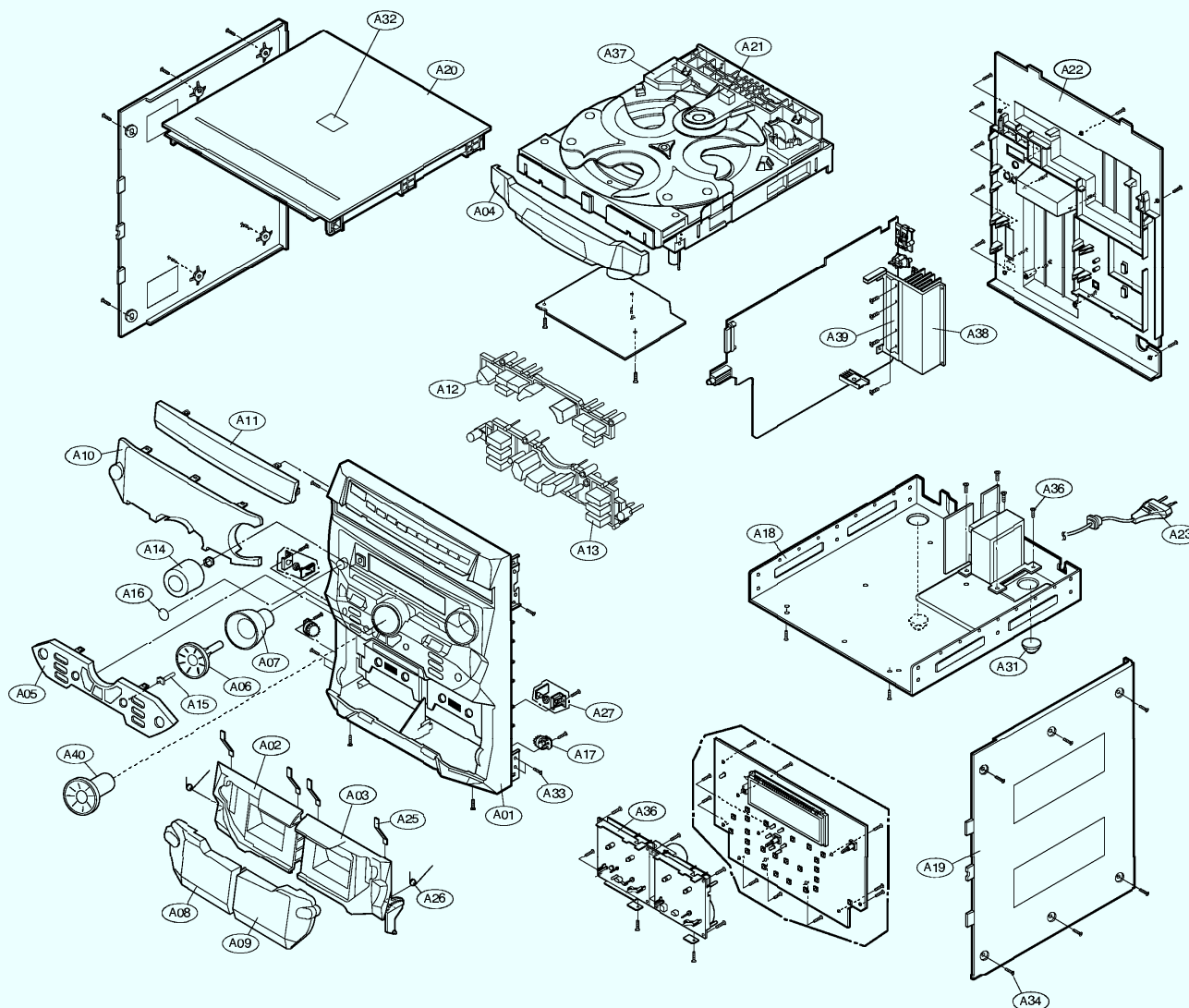


EXPLODED VIEW/PARTS LIST

• CABINET

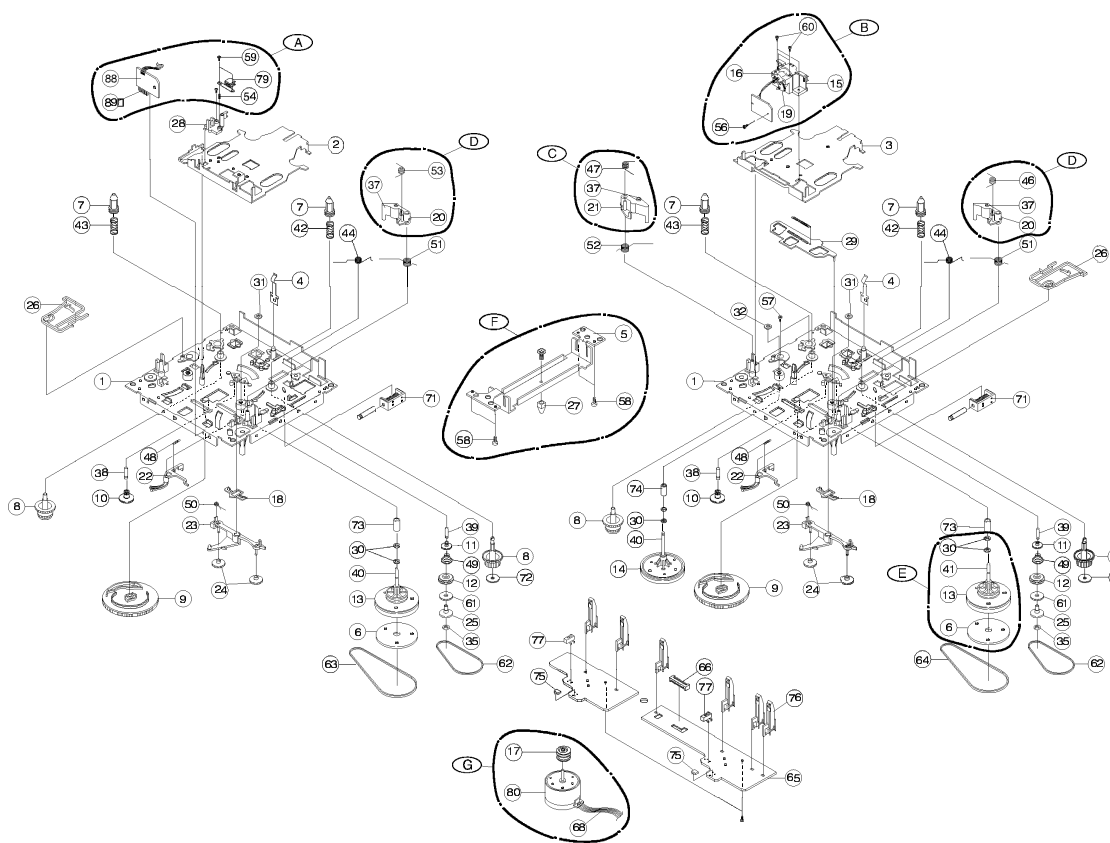


S	LOCA.NO.	PART NO.(S)	DESCRIPTION	SPECIFICATION	VC
A01	3720SCM038A(*)	PANEL	FRONT		HZ
A02	3680SCA349A	DOOR	CST LEFT		HZ
A03	3680SCA347A	DOOR	CST RIGHT		HZ
A04	3680SC0878A	DOOR	CD		HZ
A05	3680SC0008B	COVER	FRONT		HZ
A06	4940SC0059A	KNOB	JOG(FH-515 ONLY)		HZ
A07	3680SC0074B	LENS	JOG(FH-515 ONLY)		HZ
A08	3790SCM066B	WINDOW	CST-L		HZ
A09	3790SCM067A	WINDOW	CST-R		HZ
A10	3790SCM068A	WINDOW	AMP		HZ
A11	3790SCM069A	WINDOW	CD		HZ
A12	4940SC0061A	KNOB	TUNING		HZ
A13	4940SC0062A	KNOB	PLAY & FUNC		HZ
A14	4940SC0065A	KNOB	VOL		HZ
A15	3680SC0005A	LENS	SET		HZ
A16	3608S0000A	DECORATION	HITONE		
A17	4901SK0001C	DAMPER ASSY			HZ
A18	3140S-P007A	CHASSIS	MAIN		HZ
A19	3720SC0060D	PANEL	SIDE		HZ
A20	3080S-0003F	CABINET	TOP		HZ
A21	447-988K	CUSHION	CUSHION RUBBER(MTR-40050)		HZ
A22	3720SCM424A(*)	PANEL	BACK(FH-513)		HZ
A23	3720SCM407D(*)	PANEL	BACK(FH-515)		HZ
A24	6410SCF200A	POWER CORD	CE-503PLUG CHAUS CE 2000M		HZ
A25	632N218E	COIL, ANTENNA	KS951212-01 KWANGSUNG		HZ
A26	442-577B	SPRING	SPRING CST-PACK(I-47.5)		
A27	442-085A	SPRING	SPRING-DOOR		
A28	394-535A	GUIDE	EJECTAY		
A29	4930S-0638A	HOLDER	HOLDER GUIDE		
A30	442-780A	SPRING			
A31	394-014A	GUIDE	EJECTOR		
A32	265-013B	FOOT	RUBBER(NBR)		
A33	246-444K	DECORATION	PLATE FF-HL588V SILVER		HZ
A34	363-025T	SCREW	TAPTITE 3K10.5 FZMY		HZ
A35	363-025C	SCREW	TAPTITE 3K10 FPK		HZ
A36	11TRL0402#18	BRAZER HEAD TA	D 4.0 L 8.0MSWFG3FZY		HZ
A37	6730S-G006B	DECK MECHANISM	ADR2400FF SAMSUNG		HZ
A38	4406SCF002A	MECHANISM ASSY	CD-MH1303 SHIN HEUNG CD		HZ
A39	4920S-E004A	HEAT SINK	MAIN		HZ
A40	4810S-0167A	BRACKET	IC		HZ
A41	3680SC0009A	COVER	LOOKING JOG(FH-513 ONLY)		HZ

*VC Shows the origin of local parts(HZ:LG&I2)

* : Refer to the PPM. (See Part Price List).

• TAPE DECK MECHANISM:AUTO REVERSE DECK(OPTIONAL)

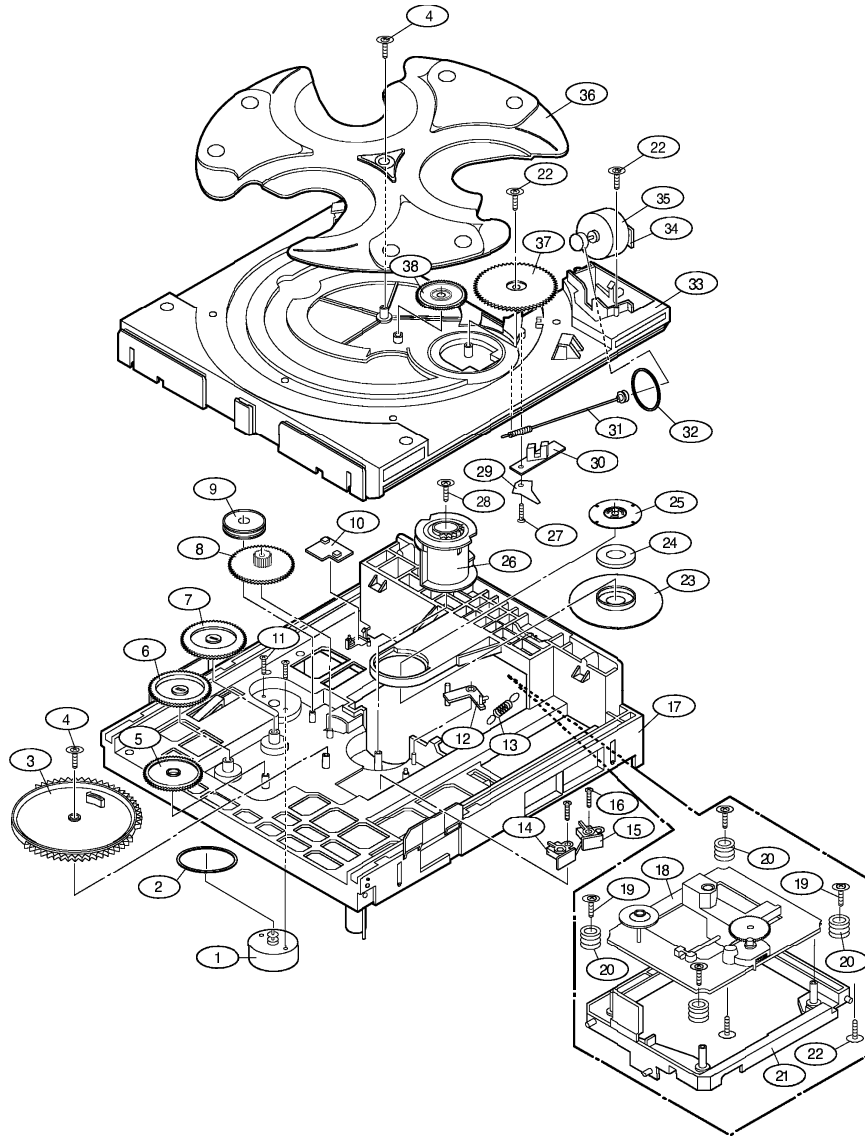


NSP: Not Serviceable Part

REF. NO.	PART NAME	PART NO.	QTY	REF. NO.	PART NAME	PART NO.	QTY
-	DECK MECHANISM	67305-C-00A		49	SPRING C	NSP	2
1	CHASSIS MAIN	NSP	2	50	SPRING ARM R/F	NSP	2
2	BASE HEAD DC	NSP	1	51	SPRING 2/3 RETURN (F)	NSP	2
3	BASE HEAD DD	NSP	1	52	SPRING 2/3 RETURN (R)	NSP	1
4	PLATE SPRING	NSP	2	53	SPRING 2 INCH 1-WAY	NSP	1
5	BKKT MOTOR 110	NSP	1	54	SPRING AZIMUTH	NSP	1
6	PLATE FLYWHEEL F	NSP	2	55	PE M1.6x8	NSP	2
7	CHIP R RKL	NSP	4	56	BE M2.4	NSP	4
8	BASE REEL	NSP	4	57	PE M2.6x5	NSP	2
9	GEAR CAM	NSP	2	58	TAPPING M2.0x4	NSP	4
10	GEAR IDLER	NSP	2	59	AZIMUTH S/C 1-WAY	NSP	1
11	BUSH C	NSP	2	60	AZIMUTH S/C M2.5x7	NSP	2
12	PULLEY C	NSP	2	61	RELTC	NSP	2
13	PULLEY F/W F	NSP	2	62	BELT SUB (H38.1)	NSP	2
14	PULLEY F/W R	NSP	1	63	BELT 110x4	NSP	1
15	BKKT HEAD B	NSP	1	64	BELT 110x4	NSP	1
16	GEAR HEAD B	NSP	1	65	PC5 CONTROL DOUBL	NSP	1
17	PULLEY M/C F/W	NSP	1	66	CONNECTOR (62)	NSP	1
18	LEVER BRAKE	NSP	2	67	CONNECTOR (6P)	NSP	1
19	GEAR DIR	NSP	1	68	WIRE MOTOR (4P-60)	NSP	1
20	ARM PINCH F	6768SCA303A	2	69	ROLLER PINCH	6768SCAS01A	3
21	ARM PINCH R	6768SCA304A	1	70	WEDGE (M-30)	NSP	1
22	ARM CAM LOCK	NSP	2	71	SOLENOID (24 OHM)	6768SCVS02A	2
23	ARM RF	NSP	2	72	REFLECTOR	NSP	2
24	GEAR RF	NSP	4	73	METAL FG F(CAPSTAN)	NSP	2
25	CAP C	NSP	1	74	METAL FG R(CAPSTAN)	NSP	1
26	LEVER EJECT	6768SCDS04A	2	75	PHOTO SENSOR	NSP	2
27	GUIDE MOTOR	NSP	1	76	SWITCH DETECT	NSP	6
28	TAPE GUIDE	NSP	1	77	SWITCH MODE	6768SCST01B	2
29	LEVER AC	NSP	1	78	HEAD R/P	NSP	1
30	W/S (2.34, 2.0, 2.5)	NSP	3	79	HEAD 1-WAY	NSP	1
31	W/S (1.8, 2.0, 2.5)	NSP	2	80	MOTOR (V D 6H)	6768SCCS01A	1
32	W/S (1.6, 2.5, 2.0, 2.5)	NSP	1	81	WIRE HEAD (BRN)	NSP	1
33	W/S (3.6, 2.0, 2.5)	NSP	4	82	WIRE HEAD (BLU)	NSP	1
34	W/S (6.1, 2.0, 2.5)	NSP	4	83	WIRE HEAD (GRN)	NSP	1
35	W/S (1.2, 2.0, 2.5)	NSP	2	84	WIRE HEAD (ORA)	NSP	1
36	W/S (4.0, 2.0, 1.0)	NSP	4	85	WIRE HEAD (RED)	NSP	1
37	SHAFT PINCH	NSP	3	86	WIRE HEAD (WHT)	NSP	1
38	SHAFT IDLER R	NSP	2	87	WIRE HEAD (YEL)	NSP	1
39	SHAFT R	NSP	2	88	Head PCB	NSP	1
40	SHAFT F/W R	NSP	1	89	CONN Head (3P)	NSP	1
41	SHAFT F/W F	NSP	2	90	HEAD ASSY RP6	6768SCCS03B	
42	SPRING B/T/R	NSP	2	91	BRK HEAD ASSY 10P1	6768SCCS04A	
43	SPRING BASE HEAD	NSP	2	92	ARM Pinch R ASSY	6768SCAS01A	
44-1	SPRING LEVER AC	NSP	1	93	ARM Pinch F ASSY	6768SCAS01B	
45	SPRING DHX	NSP	1	94	Pulley F/W F ASSY	6268SCCS02A	
46	SPRING PINCH H/F	6768SCCS02A	1	95	MOTOR BBKT ASSY	6768SCPS01A	
47	SPRING PINCH H/R	6768SCBC00A	1	96	MOTOR ASSY	6768SCCS03A	
48	SP ARM CAM LOCK	NSP	2				

EXPLODED VIEW/PARTS LIST

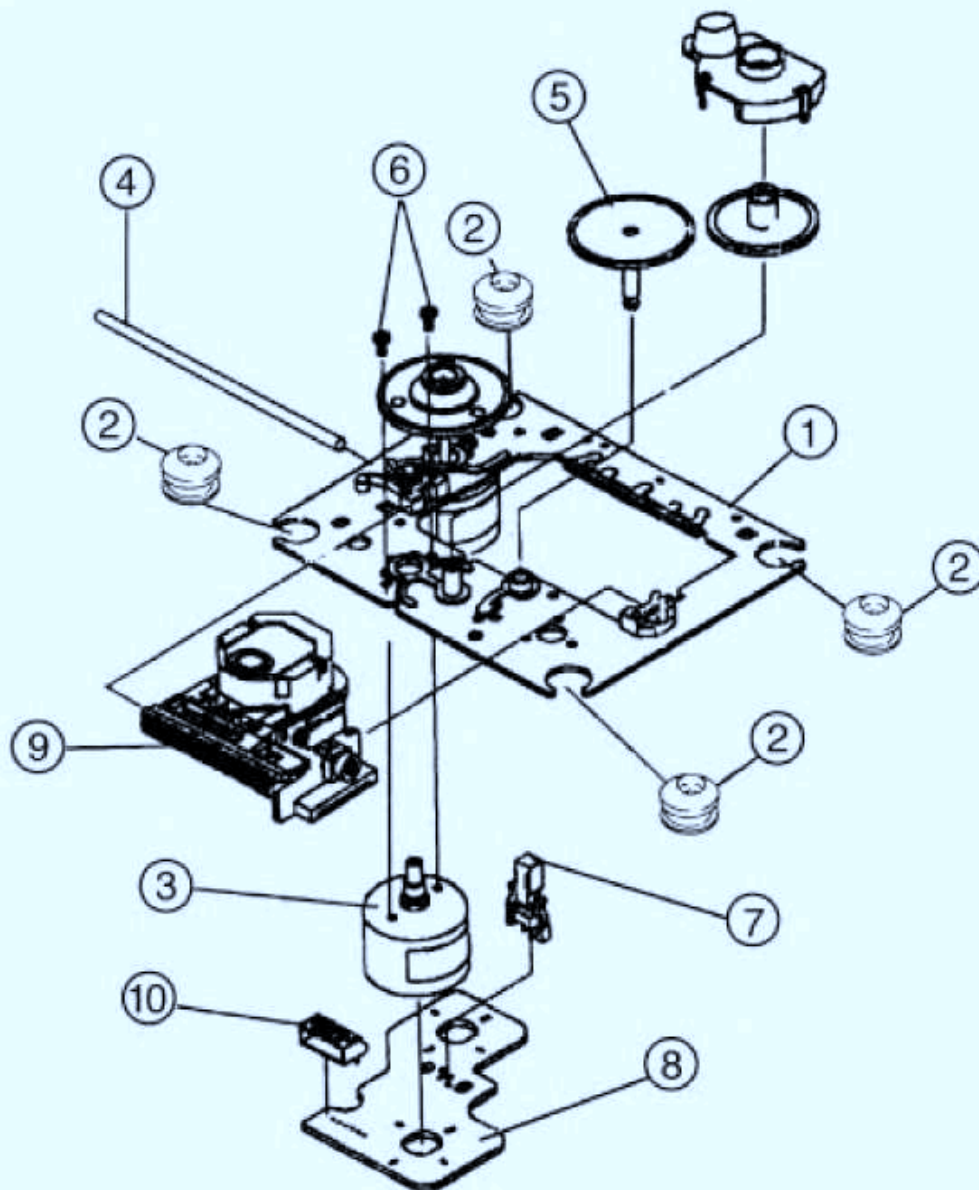
• CD MECHANISM



REF.NO.	PART NO.	DESCRIPTION
-	4405SCE002A	CD MECHANISM ASS'Y(CDM-H1303)
1	4680SBP001A	MOTOR PULLEY ASS'Y
2	4400SB0001A	BELT MAIN
3	4470SB0005A	GEAR MAIN
4	88H-0004	SCREW(3X12X12)
5	4470SB0007A	GEAR PU UP-A
6	4470SB0008A	GEAR PU UP-B
7	4470SB0006A	GEAR PU DOWN
8	4470SB0004A	GEAR LOADING
9	4470SB0003A	GEAR PULLEY
10	6871SB21RAD	PCB ASS'Y CLOSE
11	353S353F	SCREW D2.6 L4.0
12	4974SB0001A	GUIDE CAM
13	4970SBN002A	SPRING CAM
14	6871SC21RAD	PCB ASS'Y OPEN
15	6871SD21RAD	PCB ASS'Y CAM
16	88H-0004	SCREW(3X12X12)
17	3040SB0002A	BASE MAIN
18	4405SCB001A	MECHANISM ASS'Y(KSM-213CCM)
19	6756SBX001A	SCREW(2.6X10X10)
20	4900SB0001A	DAMPER RUBBER
21	3040SB0003A	BASE PU(CDM-H1303)
22	88H-0002	SCREW(3X9X12)
23+24+25	4860SB0002A	CLAMP ASS'Y
23	4860SB0001A	CLAMP DISC
24	524-012A	COVER CLAMP MAGNET
25	3550SB0001A	COVER MAGNET
26	4471SB0001A	GEAR CAM ASS'Y
27	353-Q25B	SCREW D3.0 L8.0
28	88H-0003A	SCREW(3X12X10)
29	4974SB0003A	GUIDE WORM
30	6871SF21RAD	PCB ASS'Y SENSOR
31	4371SB0002A	SHAFT ASS'Y TRAY
32	4400SB0001B	BELT TRAY
33	3390SB0001A	TRAY LOADING
34	6870SE21RAB	PCB ASS'Y TRAY
35	4680SBP002A	MOTOR ASS'Y TRAY
36	3390SB0002A	TRAY DISC
37	4470SB0010A	GEAR TRAY A
38	4470SB0011A	GEAR TRAY B

EXPLODED VIEW/PARTS LIST

f_T OPTICAL PICK-UP CARRIAGE



SP: Serviceable Part

NSP: Not Serviceable Part

REF.NO.	PART NO	DESCRIPTION	Q'TY	REMARK
	4405SCB001A	MECHANISM ASSEMBLY, KSM-213CCM	1	SP
1	88S-0099	TT CHASSIS ASS'Y	1	NSP
2	88S-0089	INSULATOR(S)	4	NSP
3	6756S-0001A	MOTOR	1	NSP
4	88S-0088	SLIDE SHAFT(S)	1	NSP
5	6756S-G001A	GEAR	1	SP

REF.NO.	PART NO	DESCRIPTION	Q'TY	REMARK
6	88S-0101	+P 2 3	2	NSP
7	6756S-T001A	SWITCH	1	SP
8	88S-0098	MOTOR BASE(6P)	1	NSP
9	6756S-X001A	PICK-UP, KSS-213C	1	SP
10	88S-0100	CONNECTOR 6P	1	NSP